

Library and Knowledge Services for Public Health staff

Welcome to the first Information Spotlight of 2024. This newsletter highlights the services provided by the Library and Knowledge Services team based at King’s Mill Hospital. The Library and Knowledge Service (LKS) offers support to staff working in Nottingham & Nottinghamshire ICB and the Public Health teams in Nottingham City and Nottinghamshire County. The team works collaboratively with the ICB Research and Evidence team.

This edition includes information on the LKS website, KnowledgeShare, Daily Health Bulletin, Health Management Bulletin and the NHS Knowledge and Library Hub.

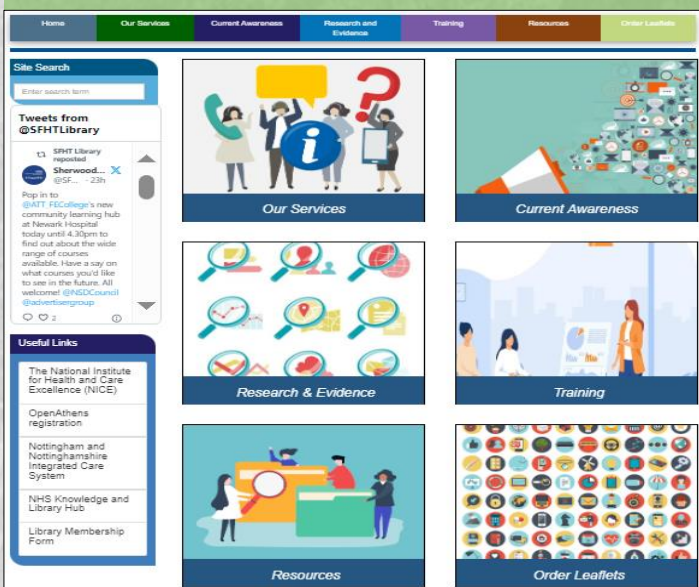
If you have any questions or require further information on any of the items, please contact us.

LKS Website

Our [website](#) gives an overview of all the services we provide, including:

- **Current Awareness.** Information about KnowledgeShare and the current awareness bulletins that you can subscribe to.
- **Research and Evidence.** Details of our evidence-finding service and the East Midlands Evidence Repository (EMER).
- **Training.** Details of the training courses we provide to PH staff, including how to book.
- **Resources.** Information on the NHS Knowledge & Library Hub, OpenAthens registration, and point of care tools.
- **Leaflet Collection.** A list of all our leaflet titles via our library catalogue and details of how to order. Links to our previous leaflet bulletins.

The website also provides links to our membership and evidence search request forms. The X (Twitter) feed keeps you up-to-date with the latest news from the service.



Current Awareness: KnowledgeShare

Keeping up to date with KnowledgeShare will enable you to receive tailored information delivered to your email inbox when you want e.g. daily, weekly, or monthly.

You will receive various types of information, including:

- Evidence summaries
- Guidelines and policy
- News
- Professional development
- Original research
- Reports
- Statistics
- Systematic reviews and meta-analysis

Signing up for a KnowledgeShare account allows you to specify subject areas you are interested in. You can set your information requirements by selecting one or more of the following options shown here along with some examples listed within each category:

- **Age groups** – children and adolescents, adults, older people
- **Conditions and Lifestyle Factors** – alcohol misuse, gambling, parenting, physical activity, smoking, tobacco and vaping, well-being etc
- **Settings** – community settings, population health, workplace health
- **Professional interests** – commissioning, health and social care, integrated care, multidisciplinary working, etc

To sign up for KnowledgeShare you will need to [register for an OpenAthens account](#).

To register for KnowledgeShare visit our website, [fill in a membership form](#), and email it back to the Library.

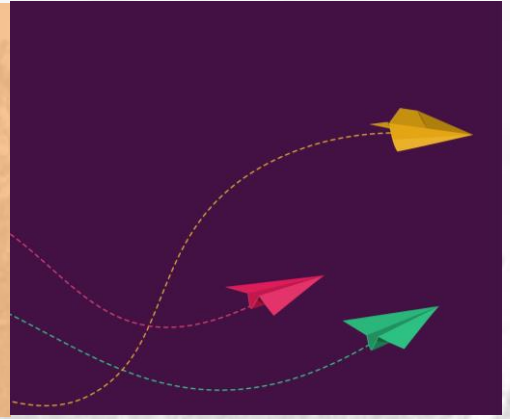


KnowledgeShare

Daily Health Bulletin

We have re-launched our Daily Health Bulletin. The Bulletin features the latest health and social care publications, compiled from a wide range of high-quality sources, including NICE, UKHSA, Office for Health Improvement & Disparities, King's Fund, NHS England, and Royal Society for Public Health.

Please contact us if you would like to receive the bulletin direct to your inbox.



Health Management Bulletin

The Library and Knowledge Service produces a brief, fortnightly bulletin for leaders and managers. It includes current information under the following headings: management, leadership, quality and safety, people management, service improvement and redesign, climate change, communication, finance, health inequalities, information management, bulletins from other organisations, patient experience, annual reports and statistics, population health, public health, and research and innovation.

To sign up for the Health Management Bulletin please contact library.sfht@nhs.net



Contact Us

Library & Knowledge Service

Sherwood Forest Hospitals NHS Foundation Trust,
King's Mill Hospital

Tel: 01623 622515 Ext. 4009

E-mail: mandy.tidswell@nhs.net
yvonne.finnigan1@nhs.net
library.sfht@nhs.net

Web: <https://lks.sfh-tr.nhs.uk>

X (Twitter): [@SFHTLibrary](https://twitter.com/SFHLibrary)

NHS Knowledge and Library Hub

The [NHS Knowledge and Library Hub](#) is an online resource that connects users to high quality, NHS-funded, knowledge and evidence resources in one place, using a single search. It is a useful starting point for getting quick access to or for scoping evidence on a wide range of public health-related topics.

With an [OpenAthens account](#), you have full access to:

- Journal articles, e-books, NICE guidelines and evidence summary tools provided nationally and locally.
- One-click links to full text, as an immediate download or on request from the Library & Knowledge Service.

Click on **Start your search** from the homepage and sign in with your OpenAthens.

If you would like to know more about the Hub or need help in searching, then please contact us or visit the [Resources](#) and [Training](#) pages on our website.



Knowledge and Library Hub

Searching: **Health and care evidence**

Keyword

[Search Options](#) ▶ [Basic Search](#) [Advanced Search](#) [PICO Search](#) [Search History](#)

