

Library and Knowledge Services for ICB staff

Welcome to the first Information Spotlight of 2024. This newsletter highlights the services provided by the Library and Knowledge Services team based at King’s Mill Hospital. The Library and Knowledge Service (LKS) offers support to staff working in Nottingham & Nottinghamshire ICB and the Public Health teams in Nottingham City and Nottinghamshire County. The team works collaboratively with the ICB Research and Evidence team.

This edition includes information on our LKS website, virtual induction, Daily Health Bulletin, Health Management Bulletin and evidence search training.

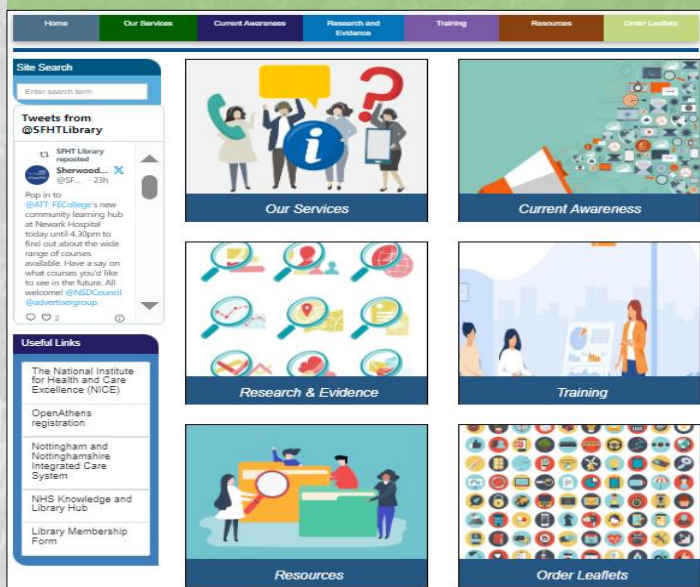
If you have any questions or require further information on any of the items, please contact us.

LKS Website

Our [website](#) gives an overview of all the services we provide, including:

- **Current Awareness.** Information about KnowledgeShare and the current awareness bulletins that you can subscribe to.
- **Research and Evidence.** Details of our evidence-finding service and the East Midlands Evidence Repository (EMER).
- **Training.** Details of the training courses we provide to ICB staff, including how to book.
- **Resources.** Information on the NHS Knowledge & Library Hub, OpenAthens registration, and point of care tools.
- **Leaflet Collection.** A list of all our leaflet titles via our library catalogue and details of how to order. Links to our previous leaflet bulletins.

The website also provides links to our membership and evidence search request forms. The X (Twitter) feed keeps you up-to-date with the latest news from the service.



Virtual Induction for ICB staff

A virtual induction to the Library and Knowledge Service is now available for ICB staff. The induction aims to give a brief overview of all the services that are available to staff.

The induction is split into two eLearning packages:

- Virtual Library Induction for ICB Staff
- Making the most of e-resources for ICB staff

The induction should take around 5-10 minutes and will give you information on a variety of topics including library services, OpenAthens, the NHS Knowledge and Library Hub, information skills training and more.

To access the induction, you will need to register for an account with the [Sherwood Learning Hub](#)

- At the bottom of the page click on **Create new account.**
- Once you have created an account you will receive an email on how to complete your registration.
- Once registration is completed, go to the [Sherwood Learning Hub](#) and **Log in.**
- At the top of the page click **Courses.**
- In the **Search courses** box type **virtual library induction**
- Click on the link **Virtual Library Induction for ICB Staff**, alternatively click on **Admin and Clerical** to the left of the **Search courses** box. Select **ICB Resources.**
- Remember to **Log Out** by clicking the icon at the top right of the page.

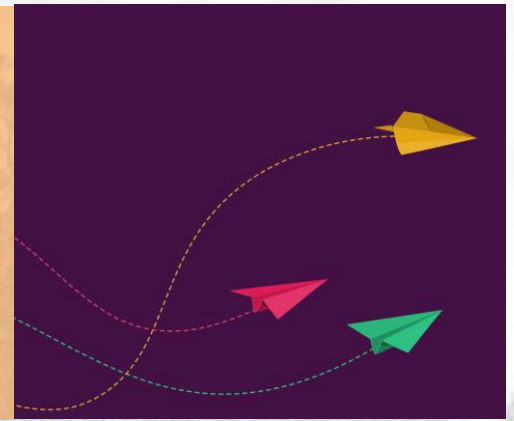
Once you have completed the course, you can download a Library membership form as well as an induction checklist which contains links to all the websites highlighted in the eLearning package from the **Additional resources** section.

If you have any questions about registering for an account or accessing the virtual induction, please contact us.

Daily Health Bulletin

We have re-launched our Daily Health Bulletin. The Bulletin features the latest health and social care publications, compiled from a wide range of high-quality sources, including NICE, UKHSA, Office for Health Improvement & Disparities, King's Fund, NHS England, and Royal College of GPs.

Please contact us if you would like to receive the bulletin direct to your inbox.



Health Management Bulletin

The Library and Knowledge Service produces a brief, fortnightly bulletin for leaders and managers. It includes current information under the following headings: management, leadership, quality and safety, people management, service improvement and redesign, climate change, communication, finance, health inequalities, information management, bulletins from other organisations, patient experience, annual reports and statistics, population health, public health, and research and innovation.

To sign up for the Health Management Bulletin please contact library.sfht@nhs.net



Contact Us

Library & Knowledge Service

Sherwood Forest Hospitals NHS Foundation Trust, King's Mill Hospital

Tel: 01623 622515 Ext. 4009

E-mail: mandy.tidswell@nhs.net
yvonne.finnigan1@nhs.net
library.sfht@nhs.net

Web: <https://lks.sfht-tr.nhs.uk>

X (Twitter): [@SFHTLibrary](https://twitter.com/SFHTLibrary)

Evidence Search Training

Training is available for ICB staff to enable you to find the evidence to support your work and/or Continuing Professional Development.

We offer two tailored training sessions, delivered one-to-one via Microsoft Teams.

- 1. Finding the Evidence and an Introduction to the NHS Knowledge and Library Hub** aims to give an overview of what to consider and where to start when looking for the evidence, including framing your question/s. This is followed by a practical session in which we guide you through the process of searching the Hub based on a question/subject you are interested in or need evidence for.
- 2. Advanced searching using the Medline database** is a practical, step-by-step approach to more in-depth searching on one of the databases on the NHS Knowledge & Library Hub. Based on a question/subject relevant to you, we will help you through the process of building a search strategy to find journal articles, save and export your search results.

Both sessions have accompanying guides to help you with your future searching.

Further details can be found on the [Training section](#) of our website.

To book a training session please contact:

Mandy.tidswell@nhs.net
Yvonne.Finnigan1@nhs.net

