

## Library and Knowledge Services for Public Health staff

Welcome to the June 2024 edition of Information Spotlight. This newsletter highlights the services provided by the Library and Knowledge Services team based at King’s Mill Hospital. The Library and Knowledge Service (LKS) offers support to staff working in Nottingham & Nottinghamshire ICB and the Public Health teams in Nottingham City and Nottinghamshire County. The team works collaboratively with the ICB Research and Evidence team.

This edition includes information on a new Public Health updates guide, finding information, eBooks, and how to create an alert on a healthcare database.

If you have any questions or require further information on any of the items, please contact us.

### Public Health Updates Guide

We have created a guide on how to find and organise up-to-date information from a variety of sources in a way that saves you time and is relevant to your areas of interest. The [guide](#), which is available on our [website](#), shows you:

#### How to get information delivered to your inbox by:

- Subscribing to organisational e-bulletins and newsletters. Organisations will usually alert you to their latest publications - this may save you having to check their websites on a regular basis.
- Contacting LKS to receive its in-house bulletins on health and social care topics.
- Signing up to a current awareness service such as **KnowledgeShare** which provides a wide range of information, personalised and tailored to your interests, saving you time searching across multiple sources.

#### How to organise all your information by:

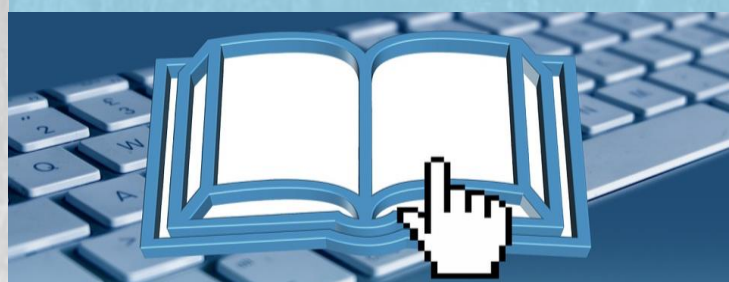
- Setting up folders in your email account for different newsletters, bulletins and KnowledgeShare.
- Selecting and saving what you need to a document, table or spreadsheet.
- Sorting your information around different subjects or themes.

### Accessing eBooks

The Library and Knowledge Service provides you with online access to a range of eBooks on the [NHS Knowledge and Library Hub](#) with your OpenAthens account.

The eBook providers are listed under the heading **Other Resources:**

- **Oxford University Press Books:** the NHS – OUP National Collection, providing medical and healthcare books online to support staff and students on placement. To access click on:
  - **Access** the collection.
  - Choose **Off-site sign in**.
  - Go to the left hand menu and see **Format**, then select **Book**. All available titles will be displayed.
- **eBook Central:** access to titles in a variety of subject areas such as Health, Medicine and Nursing:
  - Select **Browse Subjects**
  - Click on the different subject areas to see titles.
- **Kortext NHS eBooks:** subject areas include nursing, health management, primary care, general practice, mentoring and coaching:
  - Click on **Kortext Library**
  - Either **Browse by subject** or view **All books** by clicking on **See more**.



## Finding information: Where to start? A quick guide for public health staff

Are you looking for information sources and are unsure where to look? The team has recently put together a new guide to highlight what is accessible and available to you.

The guide provides staff with an overview of where to look, the resources that are available and how to keep up to date. It highlights our website, OpenAthens registration, NHS Knowledge and Library Hub, eJournals, healthcare databases, eBooks and current awareness. This helpful [guide](#) can be found on our [website](#).



## Creating an alert on a Healthcare database

You can keep up to date with the latest research articles published in your areas of interest by creating an alert on one or more of the healthcare databases on the [NHS Knowledge and Library Hub](#). An alert allows you to receive notifications in your inbox about new articles added to the databases in the subject areas of your choice.

To do this you will need to have:

- An OpenAthens account.
- A defined search question.
- A search strategy

We can help you with developing your search strategy as well as how to set up your alert on the databases. Please contact us if you would like us to support you with this.



## Contact Us

### Library & Knowledge Service

Sherwood Forest Hospitals NHS Foundation Trust, King's Mill Hospital

**Tel:** 01623 622515 Ext. 4009

**E-mail:** [mandy.tidswell@nhs.net](mailto:mandy.tidswell@nhs.net)  
[yvonne.finnigan1@nhs.net](mailto:yvonne.finnigan1@nhs.net)  
[library.sfht@nhs.net](mailto:library.sfht@nhs.net)

**Web:** <https://lks.sfht-tr.nhs.uk>

**X (Twitter):** [@SFHTLibrary](https://twitter.com/SFHTLibrary)

