

Library and Knowledge Services for Public Health staff

Welcome to the July 2025 edition of Information Spotlight. This newsletter highlights the services provided by the Library and Knowledge Services team based at King's Mill Hospital. The Library and Knowledge Service (LKS) offers support to staff working in Nottingham & Nottinghamshire ICB and the Public Health teams in Nottingham City and Nottinghamshire County. The team works collaboratively with the ICB Research and Evidence team.

This edition includes information on how to register for KnowledgeShare, our Bluesky account, finding case studies, national changes to e-resources and e-book access, and the updated NHS Knowledge & Library Hub.

If you have any questions or require further information on any of the items, please contact us.



KnowledgeShare

A new way to register for KnowledgeShare

It is now easier to register for our KnowledgeShare service. Registration can be completed by filling in a simple [form](#) available on the Library and Knowledge Service [website](#).

What is KnowledgeShare?

It's an online current awareness system enabling you to keep up to date with the latest information and research relevant to you. Based on your professional interests it is personalised and targeted.

What kind of information will I receive?

Guidelines, policy documents, reports, news and research based on your areas of interest and delivered via email, all in one place and on a regular basis. This could save you time in finding the latest information.

How often will I receive my KnowledgeShare email?

Either, weekly, biweekly or monthly.

How do I list my areas of interest?

KnowledgeShare provides a number of categories in which you can select topic areas and subjects you are interested in. Select one or more options from the following **categories**:

Age groups: Neonates , Children (0-18), Adults (0-65) and Older people

Settings: Community settings, Population health, Hospital settings, General Practice

Professional interests: Service design and commissioning, Managing and leading people, Patient and carer experience, Using guidelines and evidence, Conducting research

Conditions and lifestyle factors: There are several subjects to choose from, too many to list here!

For example: Alcohol misuse, homelessness, obesity, physical activity, population and health inequalities, substance misuse

What if I receive too much or too little information?

Contact us and we will adjust the choices you have made.

If you no longer want to receive information from KnowledgeShare, you can unsubscribe at any time by contacting a member of the Library team

Library and Knowledge Service on Bluesky

We have joined Bluesky to give you another option for keeping up to date with all the latest news from the Service. Follow us [@sfhtlibrary.bsky.social](https://sfhtlibrary.bsky.social) for information about training courses, new library stock, national campaigns, signposting to useful resources, staff news and much more.



National changes to e-resources and e-book access for NHS and Public Health staff

Due to a national budget reduction of £1.7 million for 2025/26 the Knowledge & Library Services team at NHS England have had to take some challenging decisions regarding access to e-resources and e-books known as 'the National Core Content Collection' for NHS staff which are available at the NHS Knowledge and Library Hub <https://library.nhs.uk/knowledgehub/>. The contracts which were cancelled on 1st July were:

- **ProQuest (for resources including AMED, British Nursing Index, Health Research Premium Collection, PsycINFO and PsycARTICLES)**
- **Oxford University Press (for Handbooks and Textbooks collection and Specialist Handbooks)**

All other national content and supporting infrastructure will remain available to all eligible users. For further information please contact us.

Contact Us

Library & Knowledge Service

Sherwood Forest Hospitals NHS Foundation Trust,
King's Mill Hospital

Tel: 01623 622515 Ext. 4009

E-mail: mandy.tidswell@nhs.net
yvonne.finnigan1@nhs.net
library.sfht@nhs.net

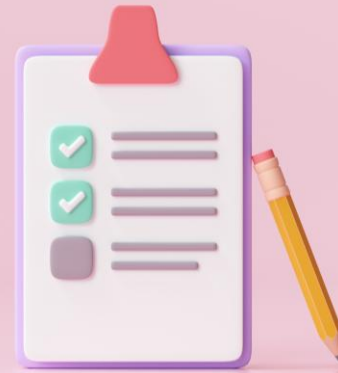
Web: <https://lks.sfh-tr.nhs.uk>

X (Twitter): [@SFHTLibrary](https://twitter.com/SFHTLibrary)

Bluesky: [@sfhtlibrary.bsky.social](https://sfhtlibrary.bsky.social)

Finding case studies: a quick guide

We have put together a new [guide](#) to help Public Health staff to find case studies that provide real world examples of services or interventions. The guide includes information on where to find case studies, hints and tips for searching, a case study sources checklist, and an example case studies results table.



NHS Knowledge & Library Hub has a makeover!

The NHS Knowledge & Library Hub has launched a new, user-friendly interface. The update includes a less cluttered search screen, with an option of natural language searching that allows you to type in your question and have it interpreted into a search query. There are also icons with direct links to resources and a link to contact the Library. The Hub continues to provide a wide range of electronic resources, and you can still access it in the same way by logging in with your OpenAthens account via the link at the top of the screen.

More details in our next issue.

