

## Welcome to Information Spotlight Library and Knowledge Services for ICB staff

Welcome to the first edition of Information Spotlight, a newsletter highlighting the services provided by the Library and Knowledge Services team based at King's Mill Hospital. The Library and Knowledge Service (LKS) offers support to the Public Health teams in Nottingham City & Nottinghamshire County and staff working in the Nottingham & Nottinghamshire ICB.

Featured in the newsletter are details on evidence searches, training sessions, and the new [NHS Knowledge and Library Hub](#). We also include practical advice around registering for OpenAthens, signing up for the new current awareness service KnowledgeShare, and accessing the NHS Knowledge and Library Hub.

If you have any questions or require further information on any of the items, please contact us.

### NHS Knowledge and Library Hub

<https://library.nhs.uk/knowledgehub/>

Funded by Health Education England, the NHS Knowledge and Library Hub connects users to high-quality knowledge and evidence resources in one place.

With an [OpenAthens account](#), you have full access to:

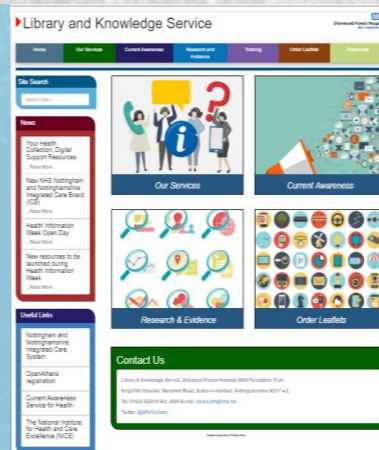
- journals, books, and databases
- clinical decision support resources including NICE Guidelines and [BMJ Best Practice](#)
- policy/management information and research literature
- [resources purchased nationally](#) and locally
- one-click links to full-text, request a copy, or contact an NHS library

Click on **Start your search** from the homepage and sign in with OpenAthens.

If you would like to know more about the Hub or need help in searching, then please contact us or visit the [Training](#) section on our [website](#).

### Our Website

Visit our [website](#) to find out more about the services that the LKS team provides, such as training courses; current awareness services; research and evidence; electronic resources; patient information; and the latest news from the department.



### Training

We provide training sessions on how to find the evidence from quality resources online and how to search for journal articles using bibliographic databases:

#### Finding the Evidence and searching the NHS Knowledge and Library Hub:

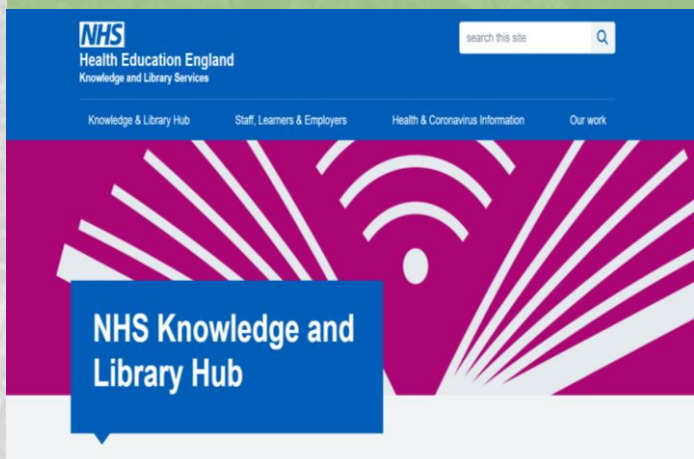
- Finding evidence using quality sources online for guidelines, reports, and evidence synopses.
- Introduction to the [NHS Knowledge and Library Hub](#), an OpenAthens-authenticated platform allowing you to search for evidence across multiple sources.

#### Advanced evidence searching using bibliographic databases (e.g. Medline) via the NHS Knowledge and Library Hub

- How to find journal articles using the databases
- How to develop a search strategy, combine search terms using Boolean logic and get better results by using thesaurus subject headings and filters
- How to access full-text journal articles, save and export results

For more details please contact:

[Mandy.tidswell@nhs.net](mailto:Mandy.tidswell@nhs.net); [Yvonne.Finnigan1@nhs.net](mailto:Yvonne.Finnigan1@nhs.net)





## Register for OpenAthens

NHS OpenAthens is an authenticated single-point of access to online information sources purchased by the NHS. It may also include access to locally and regionally purchased resources.

Registering for OpenAthens will provide you with a username and password account enabling access to a wide range of quality evidence online including healthcare databases, e-journals, and e-books, including:

- BMJ Best Practice
- E- book Central
- Healthcare databases (e.g. Medline, EMBASE, CINAHL)
- Kortext e-books
- NHS Knowledge and Library Hub



To register for OpenAthens, go to <https://openathens.nice.org.uk> and complete an online form. In the Organisation field, enter ICB. Select one of the options for Nottingham ICB staff. Once registered you can access resources in one place at the NHS Knowledge and Library Hub: <https://library.nhs.uk/knowledgehub/>

## Welcome to KnowledgeShare: the targeted current awareness service

KnowledgeShare is an online current awareness service that provides guidelines, reports, journal articles, and a range of summarised evidence, delivered to your inbox. You will only receive information that has been personalised and tailored to your specific interests.

### Personalised information for you

Register indicating your main professional interests (these can be broad or specific). You can also tailor these interests in terms of setting (Community, Population Health, Workplace Health) and age groups. You can decide how often you would like to receive updates: daily, weekly, every two weeks, or monthly.

To register for KnowledgeShare complete a library membership form and return it to:

[sfht.library@nhs.net](mailto:sfht.library@nhs.net)

If you find you are receiving too much or not enough information you can contact us at any time to adapt the settings for further personalisation.



## KnowledgeShare

## Contact Us

### Library & Knowledge Service

Sherwood Forest Hospitals NHS Foundation Trust,  
King's Mill Hospital

**Tel:** 01623 622515 Ext. 4009

**E-mail:** [mandy.tidswell@nhs.net](mailto:mandy.tidswell@nhs.net)  
[yvonne.finnigan1@nhs.net](mailto:yvonne.finnigan1@nhs.net)  
[library.sfht@nhs.net](mailto:library.sfht@nhs.net)

**Web:** <https://lks.sfht.nhs.uk>

**Twitter:** [@SFHTLibrary](https://twitter.com/SFHTRLibrary)

## Evidence searches

The LKS evidence search service aims to deliver high-quality information to support public health practice and local policy and commissioning decisions. Depending on the information request(s), evidence searches include one or more of the following:

- Guidelines, reports, and grey literature
- Journal articles
- Local and national case studies of services and/or interventions, including their impact and challenges
- Key themes from the evidence (please note: more time may be required in order to complete this)

Once we receive your request, we recommend having a brief meeting via Teams to discuss the search. The standard time for completion is approx. 10 days (depending on the complexity of the evidence search).

## Leaflet Collection

We provide a wide range of health-related leaflets to health and care professionals within the Nottingham and Nottinghamshire ICS. To access a list of our leaflet titles, go to the [library catalogue](#) and type *leaflet collection* into the search box.

We have free leaflets from organisations including: BHF, CRUK, Public Health Campaign Resource Centre and DHSC. Leaflets can be delivered to a health centre or a GP practice via the internal transport system. Contact us to place an order.

Our [leaflet bulletins](#) detail new public health campaigns, new titles in stock, and key updates. The bulletin is disseminated in a variety of ways, including via GP TeamNet and the GP newsletter. To receive the bulletin directly via email, contact us.

